

TECHNICAL BULLETIN**MAINTENANCE ISSUE**

For the Attention of : Stannah Service Branches
Date : 4-1-2010
Product : Stannah MRLi - Hydraulic Passenger Lift
Subject : Replacement of down pilot valve (Ref "VMD")
Pages : 3

Originator : Stannah Lifts Ltd, Anton Mill, Andover, Hants SP10 2NX 01264 339090

Background

Following the issue of Stannah Technical Bulletin TB82 on 13/8/09 (regarding the fitting of pawl devices on Stannah MRLi's) Stannah Lifts Ltd have identified that all reported failures have been of an older version of the down pilot valve (Ref "VMD").

Issue

In order to reduce the probability of any further valve failures, Stannah Lifts Ltd request that all older versions of VMD are replaced with the new version. The old version was present on all MRLi power units manufactured before January 2008.

New VMD valves will be supplied free of charge with all necessary fitting instructions. This should be undertaken, at the latest, during the next scheduled service visit. This operation takes approximately 5 to 10 minutes.

The new VMD valve reduces the probability of failure but does not replace the need for fitting of a pawl device as requested in Technical Bulletin TB82.

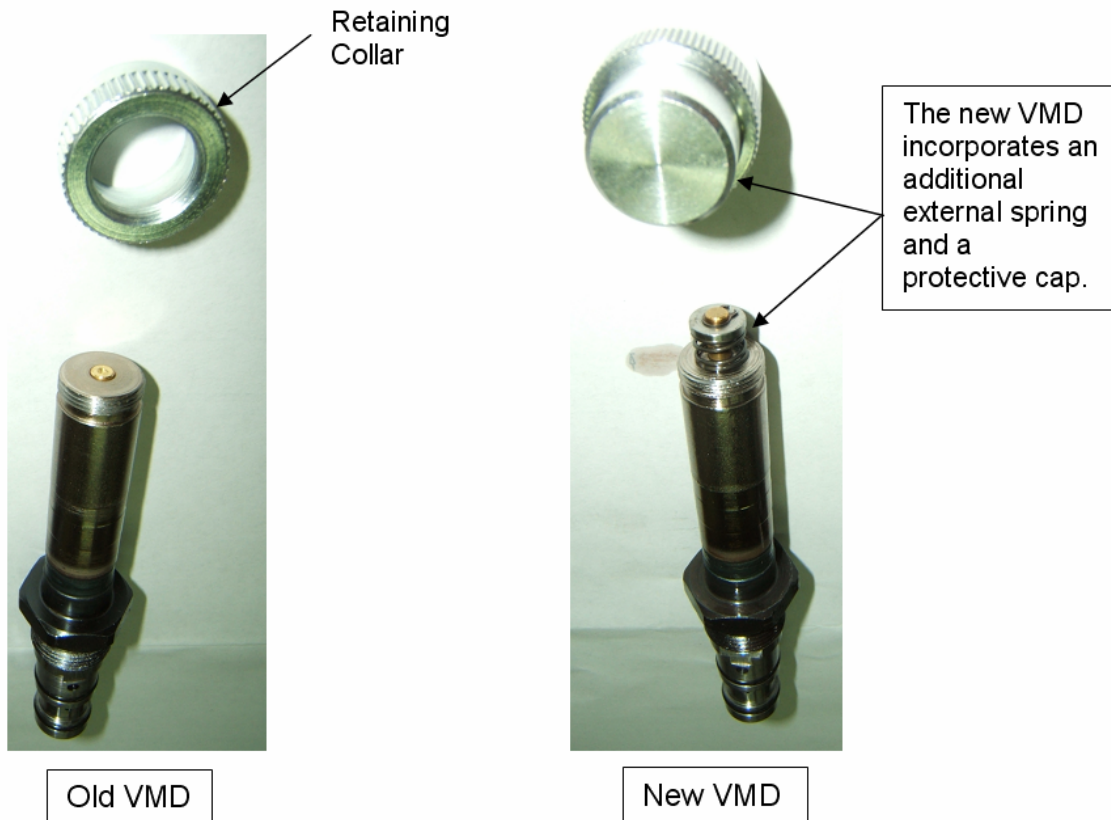
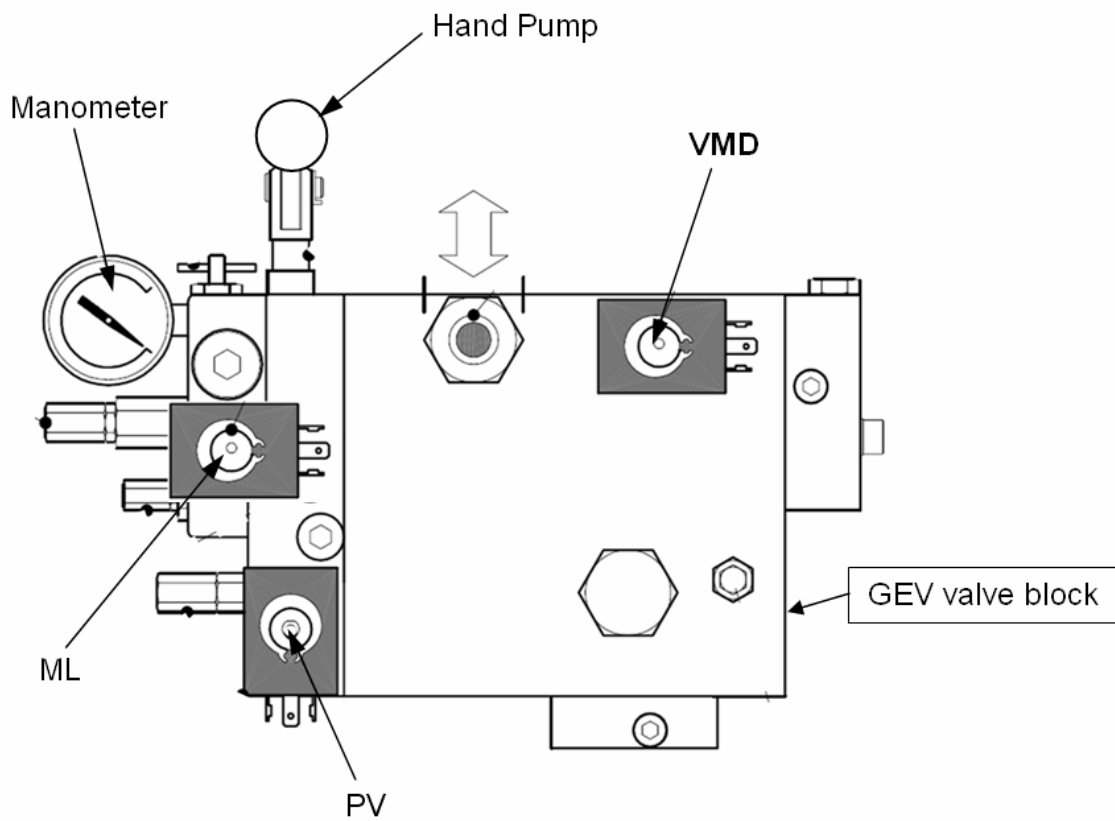
Action required by you:

- All MRLi models with the old version VMD are to be replaced with the newer version VMD, at the latest, during the next scheduled service visit.

Materials and a sequence of work will be provided to all branches.

Identification of VMD:

See diagrams on page 2.





Contacts:

To request materials please contact: Alison Gamble

E-mail: alison_gamble@stannah.co.uk

Tel: 01264 343632

For technical assistance please contact: Richard Christopher

E-mail: richard_christopher@stannah.co.uk

Tel: 01264 343652

Technical bulletin approved by: Paul Clifton, Engineering Director

E-mail: paul_clifton@stannah.co.uk

Tel: 01264 343604